



New collection

100 references
2 technologies

All in 1

Creation 30

The Reference in LVT

Gerflor®

New Creation 30 Collection

100 references
60 designs
All in 1



New designs

- 20 new exclusive designs
- Nouveaux designs
- 20 nouveaux décors exclusifs

35
CORE
DESIGNS

Core designs

- 35 designs available in all installation systems (DB, Solid Clic)

Core Designs

- 35 décors disponibles dans tous les systèmes de pose (DB, Solid Clic)



New surface treatment

- Ultra Matt Finish
- Micro Scratch Resistance
- Ease of maintenance

Nouveau traitement de surface

- Aspect Ultra Mat
- Résistance aux micro-rayures
- Facilité d'entretien



New interlocking offer

Nouvelle offre clipsable



Complete solution

- Underlayers, matting, matching skirtings and coverstrips

Offre complète

- Sous couches, tapis, plinthes et profilés coordonnés



100% in stock

100% en stock

Dry Back Solid Clic Pages

Code	Color Design			Pages
0447	Amador	■	■	18
0579	Amarante	■	-	22
0060	Arena	■	-	27
0748	Back Street	■	-	38
0347	Ballerina	■	■	11
0869	Bloom Uni Grey	■	■	37
0868	Bloom Uni Taupe	■	■	37
0871	Bostonian Oak	■	■	26
0853	Bostonian Oak Beige	■	■	26
0855	Bostonian Oak Grey	■	-	26
0851	Bostonian Oak Honey	■	■	26
1293	Braukerne Beige	■	■	24
1292	Braukerne Natural	■	■	24
0459	Brownie	■	-	17
0457	Buffalo	■	-	19
0465	Cambridge	■	-	10
0618	Carmel	■	■	39
0850	Cedar Brown	■	■	13
0849	Cedar Pure	■	■	13
0809	Chevron Hurricane	■	-	30
1276	Curton Stone Light Beige	■	■	42
1275	Curton Stone Light Grey	■	■	42
0750	Durango Moka	■	-	41
0751	Durango Taupe	■	-	41
0441	Honey Oak	■	■	9
0455	Long Board	■	■	23
0448	Malua Bay	■	■	6
0461	Michigan	■	■	16
0816	Northwood Macchiato	■	-	5
0817	Northwood Mokaccino	■	-	5
1294	Oak Fantasy Brown	■	■	14
1295	Oak Fantasy Grey	■	■	14
1296	Oak Fantasy Honey	■	■	14
1291	Oppland Stone	■	-	33
0061	Oxford	■	-	31
0856	Paint Wood Taupe	■	-	28
0374	Parker Station	■	■	32
0503	Quartet	■	■	12
0859	Quartet Fauve	■	■	12
0870	Quartet Honey	■	■	12
0456	Ranch	■	■	29
0861	Reggia Ivory	■	-	40
0436	Riverside	■	■	35
0445	Rustic Oak	■	■	15
1286	Salento Beige	■	■	43
1287	Salento Light Grey	■	■	43
0373	Silver City	■	-	34
0858	Stripe Oak Ice	■	-	7
0848	Swiss Oak Beige	■	■	20
0795	Swiss Oak Cashmere	■	-	20
0796	Swiss Oak Golden	■	■	20
0846	Swiss Oak Pearl	■	■	20
0504	Twist	■	■	21
1285	Urban Street Beige	■	-	36
1283	Urban Street Light	■	-	36
1284	Urban Street Medium	■	-	36
1288	White Lead Oak Blond	■	-	25
1289	White Lead Oak Dark Beige	■	-	25
1290	White Lead Oak Shadow Grey	■	-	25
0584	White Lime	■	■	8

Design shade variation / Niveau de contraste du décor : Light / Léger Medium / Moyen High / Fort

Exclusive by Gerflor

2 technologies
2 products

All in 1



Creation 30 Solid Clic

- Duocore 2.0: New rigid core
- Exclusive Clic - Ideal for renovation
- Acoustic and walking comfort

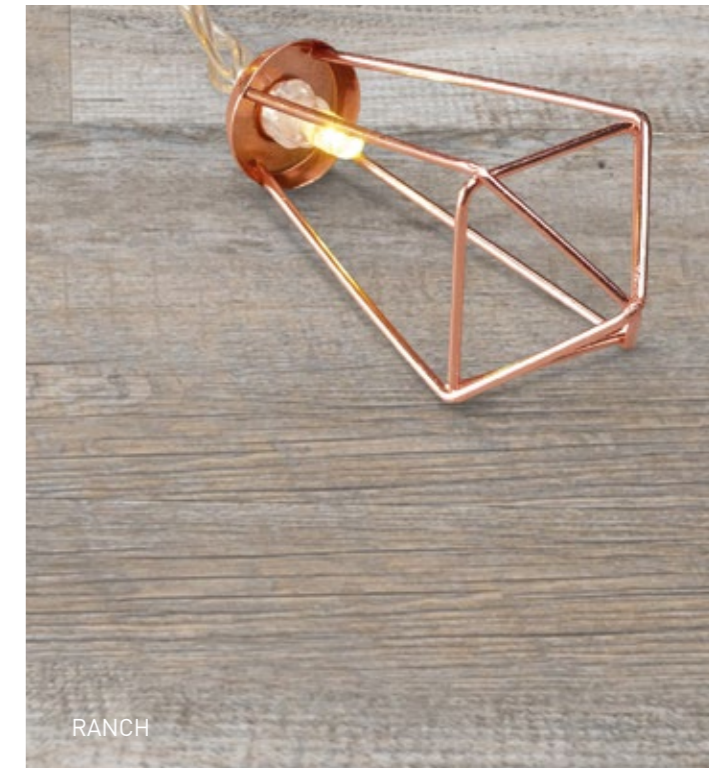
- Duocore 2.0 : Nouvelle formulation rigidifiée
- Système clipsage exclusif
- Rénovation sur support existant
- Confort acoustique et à la marche



Creation 30

- Ideal for New build
- Largest choice of designs: Mix & Match

- Pose sur support neuf ou préparé
- L'offre décors la plus large : Mix & Match



■ Available / Disponible

Non contractual imagery / Reproductions coloris non contractuelles

Northwood



NORTHWOOD MACCHIATO



NORTHWOOD MACCHIATO 0816
DB 184 x 1219



NORTHWOOD MOKACCINO



NORTHWOOD MOKACCINO 0817
DB 184 x 1219

Malua Bay



MALUA BAY



MALUA BAY 0448
DB 184 x 1219 | **SOLID CLIC** 212 x 1239

Stripe Oak Ice



STRIPE OAK ICE



STRIPE OAK ICE 0858
DB 184 x 1219



White Lime



WHITE LIME



WHITE LIME 0584
DB 184 x 1219 | SOLID CLIC 212 x 1239



Honey Oak



HONEY OAK



HONEY OAK 0441
DB 184 x 1219 | SOLID CLIC 212 x 1239



Cambridge



CAMBRIDGE



CAMBRIDGE 0465
DB 184 x 1219



10 CAMBRIDGE

Ballerina



BALLERINA



BALLERINA 0347
DB 184 x 1219 | SOLID CLIC 212 x 1239



BALLERINA

Quartet



QUARTET HONEY 0870
DB 184 x 1219 | **SOLID CLIC** 212 x 1239



QUARTET FAUVE 0859
DB 184 x 1219 | **SOLID CLIC** 212 x 1239



QUARTET 0503
DB 184 x 1219 | **SOLID CLIC** 212 x 1239



Cedar Brown



CEDAR BROWN 0850
DB 230 x 1500 | **SOLID CLIC** 240 x 1461

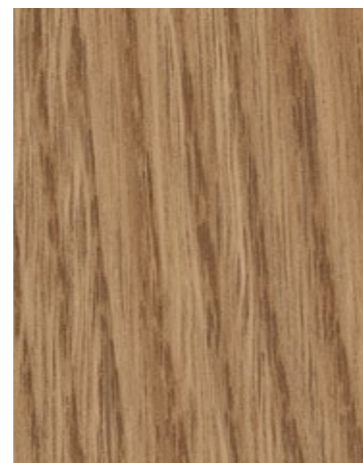


CEDAR PURE 0849
DB 230 x 1500 | **SOLID CLIC** 240 x 1461

Oak Fantasy



OAK FANTASY HONEY



OAK FANTASY HONEY 1296
DB 184 x 1219 | **SOLID CLIC** 212 x 1239



OAK FANTASY GREY 1295
DB 184 x 1219 | **SOLID CLIC** 212 x 1239



OAK FANTASY BROWN 1294
DB 184 x 1219 | **SOLID CLIC** 212 x 1239



Rustic Oak



RUSTIC OAK



RUSTIC OAK



RUSTIC OAK 0445
DB 184 x 1219 | **SOLID CLIC** 212 x 1239



Michigan



MICHIGAN



MICHIGAN 0461
DB 184 x 1219 | SOLID CLIC 212 x 1239



Brownie



BROWNIE



BROWNIE 0459
DB 184 x 1219



Amador



AMADOR



AMADOR 0447
DB 184 x 1219 | SOLID CLIC 212 x 1239



Buffalo



BUFFALO



BUFFALO 0457
DB 184 x 1219



Swiss Oak



SWISS OAK GOLDEN 0796
DB 184 x 1219 | **SOLID CLIC** 212 x 1239



SWISS OAK BEIGE 0848
DB 184 x 1219 | **SOLID CLIC** 212 x 1239



SWISS OAK PEARL 0846
DB 184 x 1219 | **SOLID CLIC** 212 x 1239



SWISS OAK CASHMERE 0795
DB 184 x 1219



Twist



TWIST 0504
DB 184 x 1219 | **SOLID CLIC** 212 x 1239



Amarante



AMARANTE



AMARANTE 0579
DB 184 x 1219

Long Board



LONG BOARD



LONG BOARD 0455
DB 184 x 1219 | SOLID CLIC 212 x 1239



22 AMARANTE



LONG BOARD

Braukerne



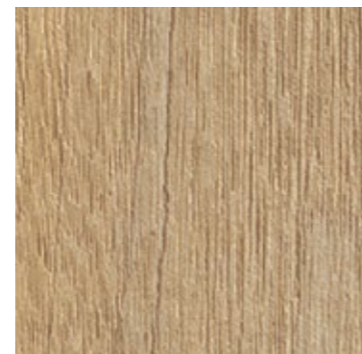
White Lead Oak



Bostonian Oak



BOSTONIAN OAK BEIGE 0853
DB 184 x 1219 | SOLID CLIC 212 x 1239



BOSTONIAN OAK HONEY 0851
DB 184 x 1219 | SOLID CLIC 212 x 1239



BOSTONIAN OAK 0871
DB 184 x 1219 | SOLID CLIC 212 x 1239



BOSTONIAN OAK GREY 0855
DB 184 x 1219



Arena



ARENA 0060
DB 184 x 1219



Paint Wood Taupe



PAINT WOOD TAUPE



PAINT WOOD TAUPE 0856
DB 184 x 1219



Ranch



RANCH



RANCH 0456
DB 184 x 1219 | SOLID CLIC 212 x 1239
230 x 1500



Chevron Hurricane



CHEVRON HURRICANE 0809
DB 184 x 1219



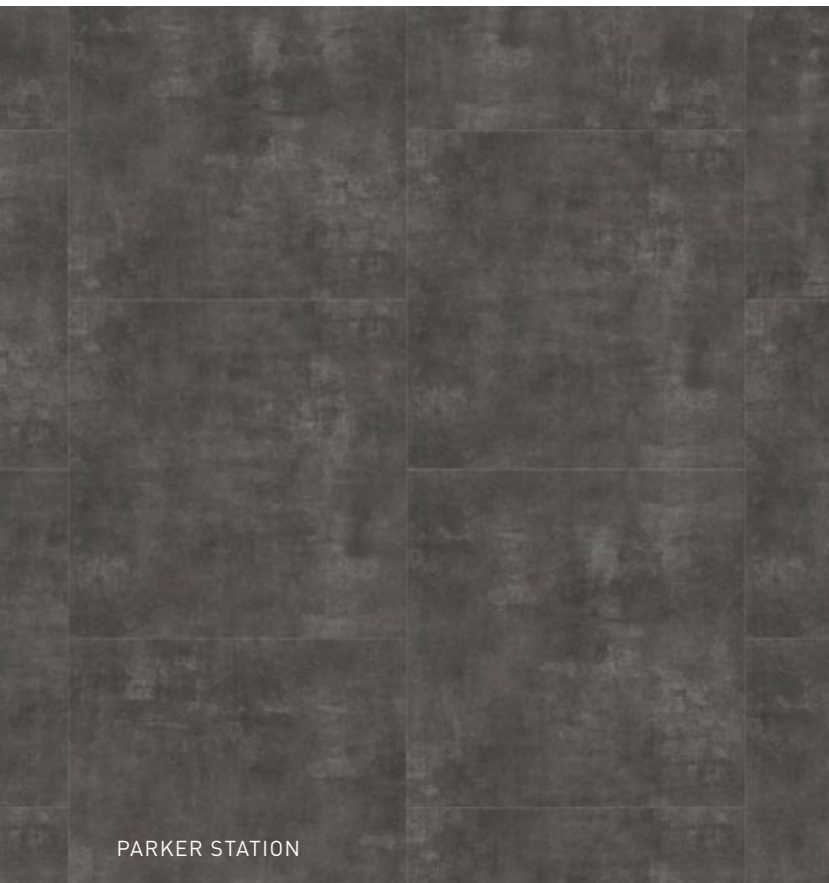
Oxford



OXFORD 0061
DB 184 x 1219



Parker Station



PARKER STATION



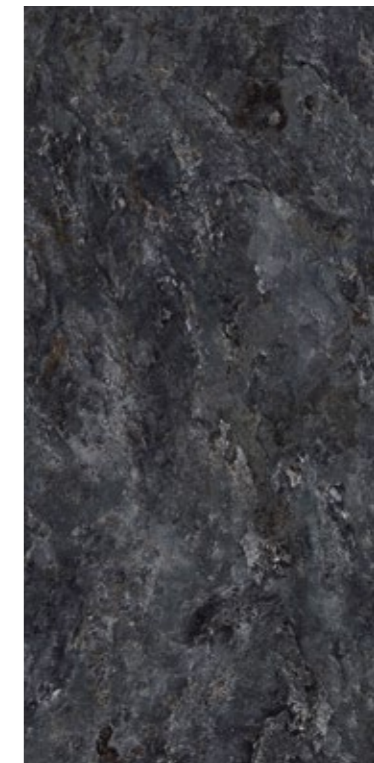
PARKER STATION 0374
DB 610 x 610 | **SOLID CLIC** 389 x 729



Oppland Stone



OPPLAND STONE



OPPLAND STONE 1291
DB 457 x 914



Silver City



SILVER CITY



SILVER CITY 0373
DB 610 x 610



Riverside



RIVERSIDE



RIVERSIDE 0436
DB 610 x 610 | SOLID CLIC 389 x 729



RIVERSIDE

Urban Street



URBAN STREET MEDIUM



URBAN STREET BEIGE 1285
DB 610 x 610

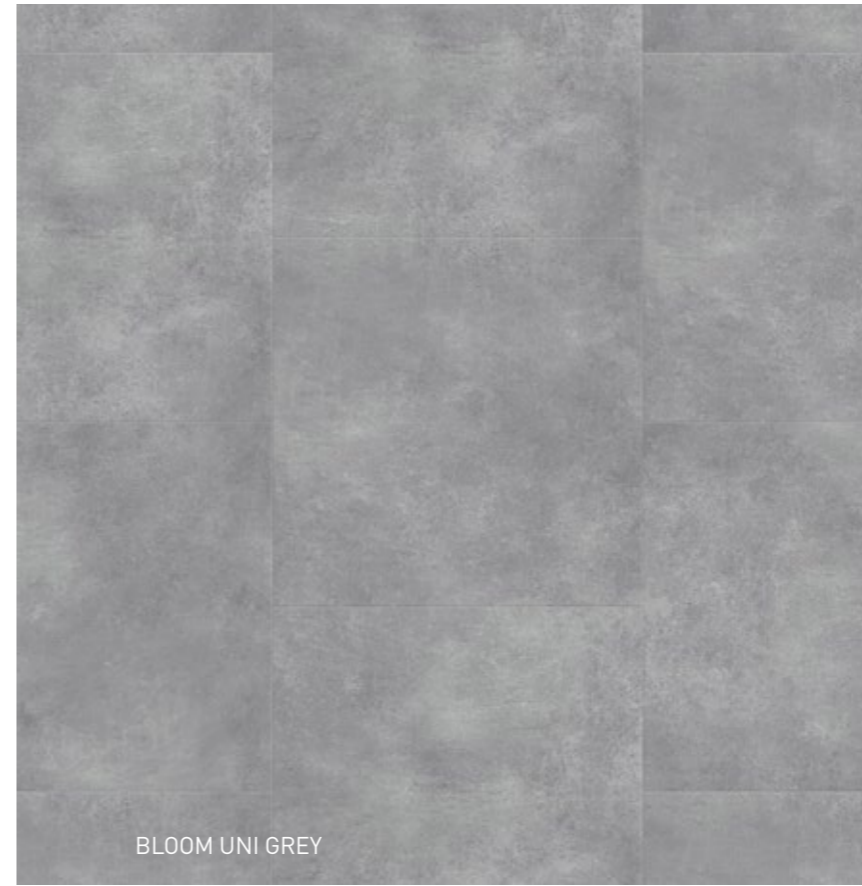


URBAN STREET LIGHT 1283
DB 610 x 610



URBAN STREET MEDIUM 1284
DB 610 x 610

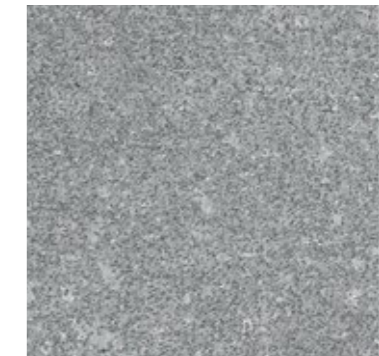
Bloom Uni



BLOOM UNI GREY



BLOOM UNI TAUPE 0868
DB 610 x 610 | SOLID CLIC 389 x 729



BLOOM UNI GREY 0869
DB 610 x 610 | SOLID CLIC 389 x 729



Back Street



BACK STREET



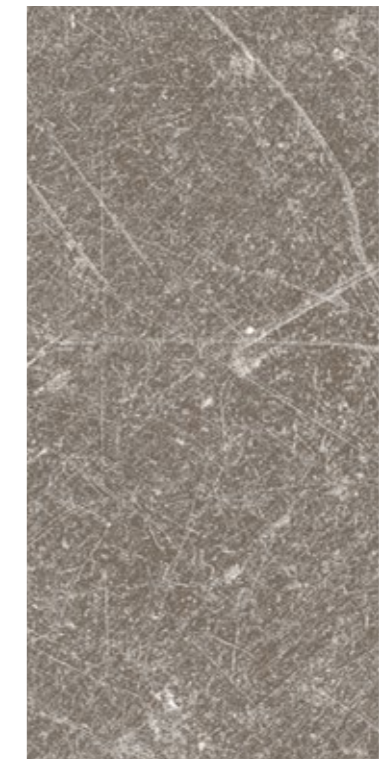
BACK STREET 0748
DB 457 x 914



Carmel



CARMEL



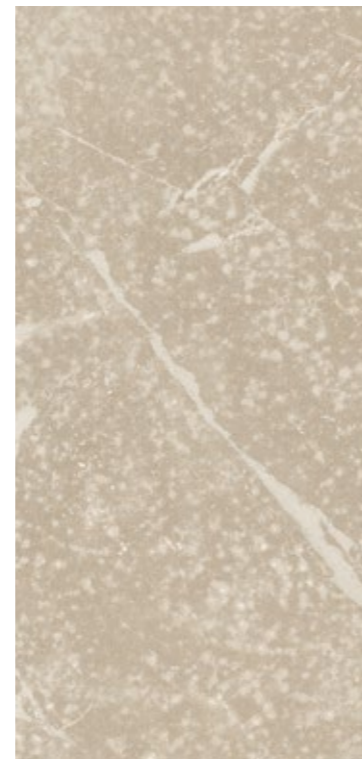
CARMEL 0618
DB 457 x 914 | SOLID CLIC 389 x 729



Reggia Ivory



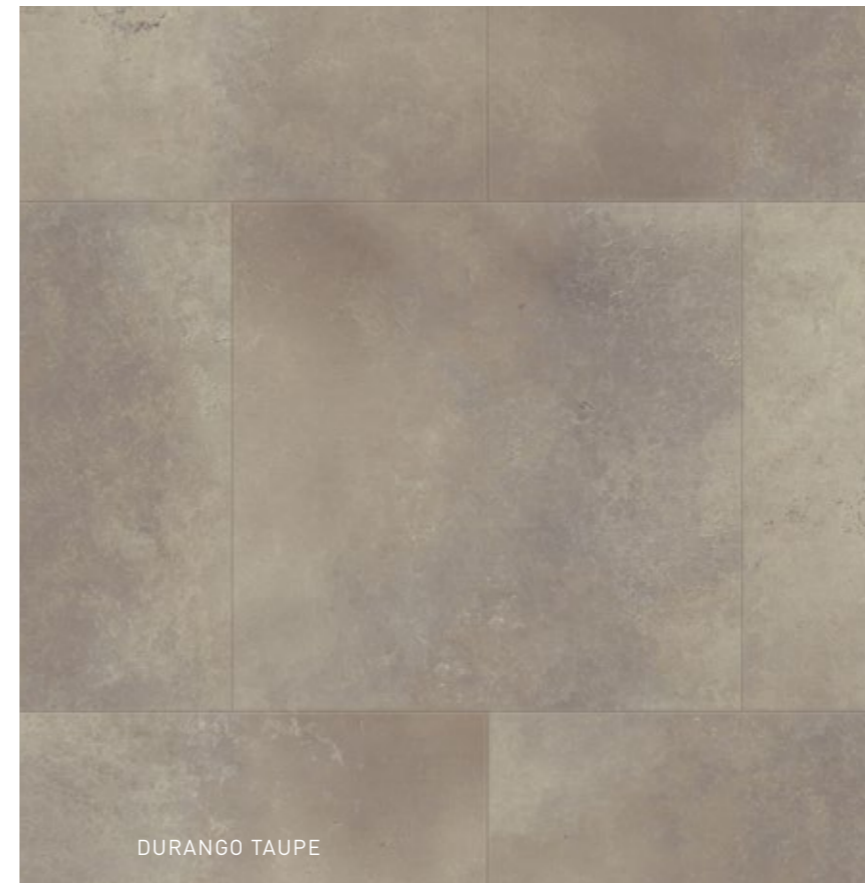
REGGIA IVORY



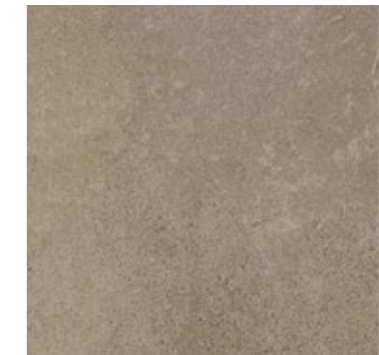
REGGIA IVORY 0861
DB 457 x 914



Durango



DURANGO TAUPE



DURANGO MOKA 0750
DB 610 x 610



DURANGO TAUPE 0751
DB 610 x 610



Curton Stone



CURTON STONE LIGHT BEIGE 1276
DB 457 x 914 | **SOLID CLIC** 389 x 729



CURTON STONE LIGHT GREY 1275
DB 457 x 914 | **SOLID CLIC** 389 x 729



Salento



SALENTO BEIGE 1286
DB 184 x 1219 | **SOLID CLIC** 212 x 1239



SALENTO LIGHT GREY 1287
DB 184 x 1219 | **SOLID CLIC** 212 x 1239



More than a floor

Bien plus que du sol

Underlayer / Sous-couche

Creation Solid Clic

Gerflor Acoustic 15dB 



Code: 1798
Format: 1m x 15lm

Gerflor Acoustic Plus 19dB 



Code: 0704
Format: 0.98m x 15.3lm

Gerflor Silence Plus 19dB 



Code: 5949
Format: 1.18m x 8.5lm

Creation (Dry Back)

Gerflor Smart Fix 16dB 

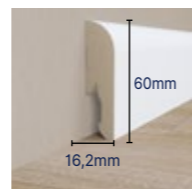
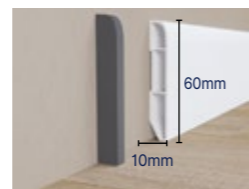


Code: 1698
Format: 1m x 7.5lm

Design skirting / Plinthe décor



White skirting can be painted over
Plinthe blanche à peindre



Vinyl Code: 6086 + Color code / MDF Code: 5947 + Color code

Endcap / embout:
60870001

Vinyl:
6086S001

MDF:
5947S001

Design coverstrip / Profilé multi-fonction décor



Aluminium color:
0647S001

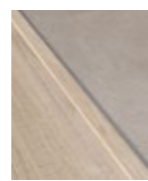
Code: 0647 + Color code - Format: 45mm x 0.90m

Available colors on gerflor.com / Coloris disponibles sur gerflor.fr

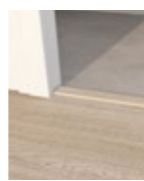
3 usages



1. Expansion gap
Joint dilatation



2. Ramp
Rampe



3. Threshold
Seuil

Entrance mat / Tapis d'entrée

Quickmat Tiles: Pre-adhesed planks (12mm thick) / Lames pré-adhésivées (épaisseur 12mm)



Code: 1725, profiles 1726 and angles 1727 - Adapted to 4 to 6mm thick products - Sol de 4 à 6mm d'épaisseur

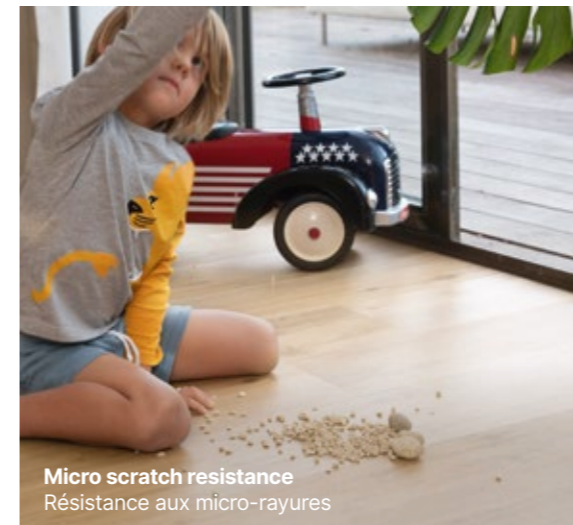
New surface treatment

Nouveau traitement de surface



Enhanced durability

Durabilité renforcée



Micro scratch resistance
Résistance aux micro-rayures

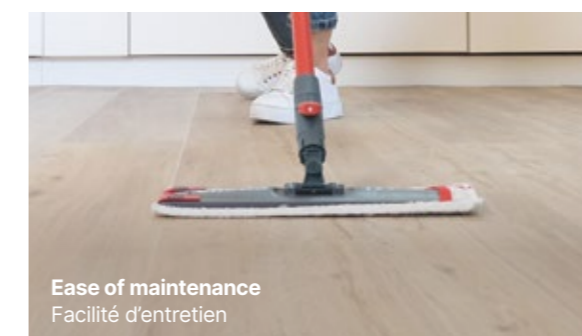
Microscopic view (x5) - Vue microscopique (x5)



Standard varnish
Vernis standard



Creation



Ease of maintenance
Facilité d'entretien

Fouling after cleaning - Encrassement après entretien



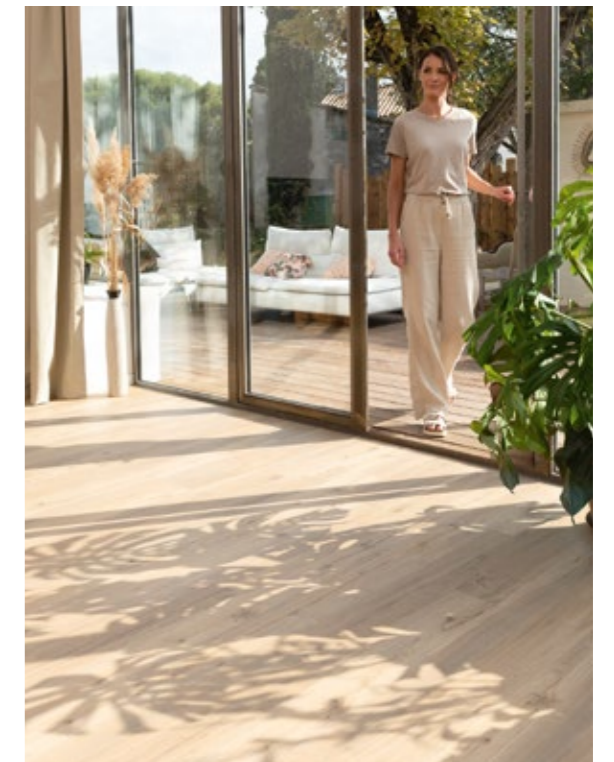
Standard varnish
Vernis standard



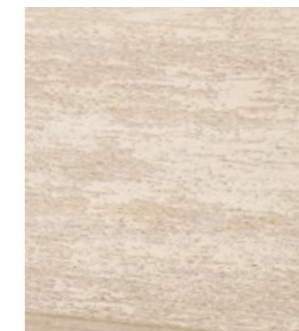
Creation

Ultra matt finish

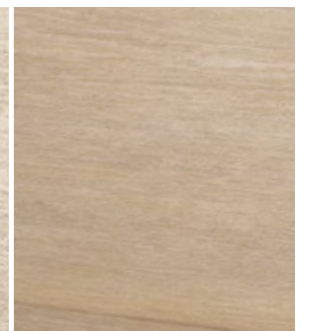
Aspect ultra mat



Gloss level (60° test) - Brilliance (test 60°)



Standard varnish
Vernis standard



Creation 2019 / Creation 2022
Unchanged visual aspect
Même matité

Maintenance guidelines available on gerflor.com
Protocoles d'entretien disponibles sur gerflor.fr

European LVT manufacturer since 1985
Fabricant Européen de LVT depuis 1985

- 4 LVT factories
- Stock in Europe
12 logistics hubs
- Internal Design Center
> exclusive designs
- 4 sites de production LVT
- Stock en Europe
12 plateformes logistiques
- Direction artistique intégrée
> décors exclusifs

Gerflor The Reference!

CURTON STONE LIGHT BEIGE

PACKAGING

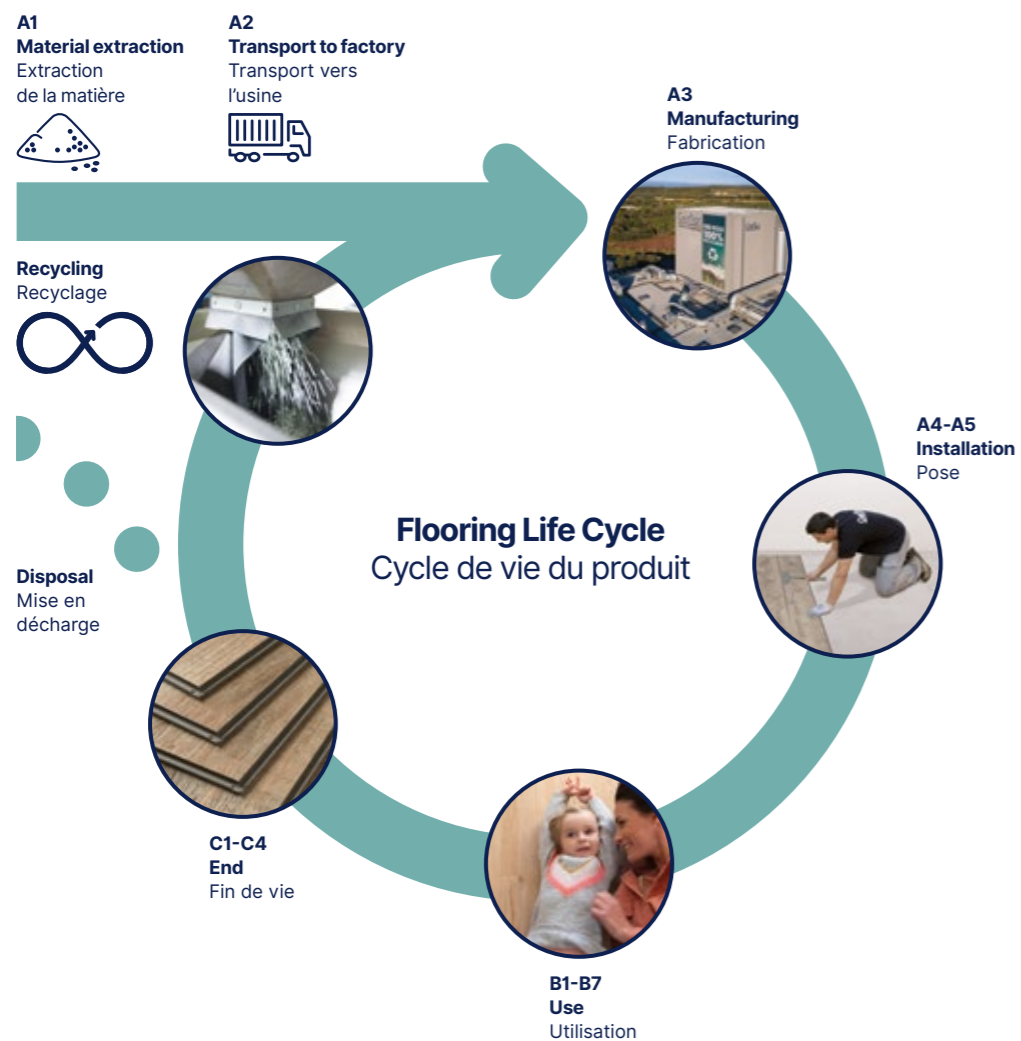
Format (mm)	m ² /box	m ² /pallet
Creation 30 Design		
457 x 914	3.76	248.16
610 x 610	3.35	234.50
184 x 1219	3.36	241.92
230 x 1500	3.80	250.80
Chevron 184 x 1219	3.14	251.20
Creation 30 Solid Clic		
212 x 1239	2.10	113.30
240 x 1461	2.45	117.60
389 x 729	1.98	107.10

Our Commitments for a Sustainable future

Nos engagements pour un développement durable

All Gerflor product ranges are developed according to a life cycle analysis model

Toutes les gammes de produits Gerflor sont développées selon un modèle d'analyse de cycle de vie



Third-party verified life cycle analysis of our products can be found in their Environmental Product Declaration (EPD)

Les analyses de cycle de vie certifiées par un laboratoire indépendant sont disponibles dans les fiches de données environnementales et sanitaires (FDES)

Creation, the reference in sustainability

Creation, la référence en développement durable



Carbon footprint

- Manufacturing Footprint in Europe
- ISO 14001 & 50001 certifications
- Renewable energy

Empreinte carbone

- Présence industrielle en Europe
- Certifications ISO 14001 & 50001
- Énergie renouvelable

3 factories in Europe
3 sites de production en Europe



Circularity

- 100% recyclable products
- High % of recycled content
- Adhesive Free solutions
- Packaging using 100% recycled cardboard

Économie circulaire

- Produits 100% recyclables
- Fort % de contenu recyclé
- Solutions de pose sans colle
- Packaging carton 100% recyclé



Health and safety

- 100% Reach compliant
- Phthalate free*
- Formaldehyde Free
- Indoor Air Quality: TVOC <10 µg/m³ after 28 days

Santé et sécurité

- 100% conforme Reach
- Sans phthalate*
- Sans formaldéhyde
- Qualité de l'air intérieur : TVOC <10 µg/m³ après 28 jours (ISO 16000-6)

* Except recycled content
* Hors contenu recyclé



we care / we act

Creation 30

Code	Color Design	Dry Back	Solid Clic	Skirting / Plinthe Matching design	Coverstrip / Profilé Matching design	Emboss / Grain	NCS	LRV
0447	Amador	184 x 1219	212 x 1239	S004	S004	Saw Effect	5005-Y50R	25.1
0579	Amarante	184 x 1219	-	S005	S001	Brushed	5010-Y30R	21.3
0060	Arena	184 x 1219	-	S026	S001	Saw Effect	4005-Y20R	37.2
0748	Back Street	457 x 914	-	S095	S001	Hammered	4502-Y	27.9
0347	Ballerina	184 x 1219	212 x 1239	S008	S008	Natural	4040-Y20R	28.4
0869	Bloom Uni Grey	610 x 610	389 x 729	S071	S071	Hammered	5005-B20G	23.2
0868	Bloom Uni Taupe	610 x 610	389 x 729	S072	S072	Hammered	4502-Y	28.5
0871	Bostonian Oak	184 x 1219	212 x 1239	S016	S016	Natural	5020-Y20R	26.4
0853	Bostonian Oak Beige	184 x 1219	212 x 1239	S017	S017	Natural	4005-Y20R	36.7
0855	Bostonian Oak Grey	184 x 1219	-	S018	S001	Natural	6005-Y20R	24.0
0851	Bostonian Oak Honey	184 x 1219	212 x 1239	S019	S019	Natural	4020-Y20R	29.8
1293	Braukerne Beige	184 x 1219	212 x 1239	S158	S001	Brushed	3010-Y40R	35.8
1292	Braukerne Natural	184 x 1219	212 x 1239	S159	S001	Brushed	3020-Y60R	29.3
0459	Brownie	184 x 1219	-	S073	S001	Natural	6020-Y30R	10.7
0457	Buffalo	184 x 1219	-	S075	S001	Brushed	6010-Y10R	16.3
0465	Cambridge	184 x 1219	-	S065	S001	Natural	3030-Y20R	39.8
0618	Carmel	457 x 914	389 x 729	S020	S020	Hammered	6005-Y50R	19.2
0850	Cedar Brown	230 x 1500	240 x 1461	S024	S024	Natural	5020-Y20R	21.3
0849	Cedar Pure	230 x 1500	240 x 1461	S025	S025	Natural	3010-Y30R	39.8
0809	Chevron Hurricane	184 x 1219	-	S030	S001	Natural	6502-Y	13.8
1276	Curton Stone Light Beige	457 x 914	389 x 729	S184	S184	Stone	2010-Y40R	48.9
1275	Curton Stone Light Grey	457 x 914	389 x 729	S185	S185	Stone	3005-Y20R	45.9
0750	Durango Moka	610 x 610	-	S164	S001	Hammered	6005-Y50R	20.5
0751	Durango Taupe	610 x 610	-	S093	S001	Hammered	3005-Y20R	37.7
0441	Honey Oak	184 x 1219	212 x 1239	S033	S033	Natural	4020-Y20R	27.7
0455	Long Board	184 x 1219	212 x 1239	S034	S034	Brushed	4010-Y30R	24.8
0448	Malua Bay	184 x 1219	212 x 1239	S035	S035	Brushed	2502-Y	47.1
0461	Michigan	184 x 1219	212 x 1239	S038	S038	Brushed	6020-Y30R	13.5
0816	Northwood Macchiato	184 x 1219	-	S040	S001	Brushed	1502-Y50R	67.8
0817	Northwood Mokaccino	184 x 1219	-	S041	S001	Brushed	3010-Y30R	39.3
1294	Oak Fantasy Brown	184 x 1219	212 x 1239	S172	S001	Brushed	7010-Y90R	8.7
1295	Oak Fantasy Grey	184 x 1219	212 x 1239	S191	S001	Brushed	6010-Y70R	11.4
1296	Oak Fantasy Honey	184 x 1219	212 x 1239	S174	S001	Brushed	5020-Y50R	19.5
1291	Oppland Stone	457 x 914	-	S175	S001	Hammered	7500-N	7.7
0061	Oxford	184 x 1219	-	S043	S001	Brushed	5502-Y	19.2
0856	Paint Wood Taupe	184 x 1219	-	S046	S001	Brushed	5502-Y	18.9
0374	Parker Station	610 x 610	389 x 729	S047	S047	Hammered	8000-N	12.6
0503	Quartet	184 x 1219	212 x 1239	S056	S056	Natural	5020-Y20R	19.4
0859	Quartet Fauve	184 x 1219	212 x 1239	S057	S057	Natural	4030-Y20R	23.9
0870	Quartet Honey	184 x 1219	212 x 1239	S058	S058	Natural	3040-Y20R	28.2
0456	Ranch	184 x 1219 230 x 1500	212 x 1239	S053	S053	Brushed	5005-Y50R	23.5
0861	Reggia Ivory	457 x 914	-	S054	S001	Stone	3010-Y20R	46.1
0436	Riverside	610 x 610	389 x 729	S032	S032	Hammered	6502-Y	16.7
0445	Rustic Oak	184 x 1219	212 x 1239	S062	S062	Natural	4030-Y20R	20.4
1286	Salento Beige	184 x 1219	212 x 1239	S186	S186	Natural	2010-Y40R	37.0
1287	Salento Light Grey	184 x 1219	212 x 1239	S187	S187	Natural	2005-Y40R	46.6
0373	Silver City	610 x 610	-	S048	S001	Hammered	6502-Y	19.1
0858	Stripe Oak Ice	184 x 1219	-	S009	S001	Natural	3502-Y	37.3
0848	Swiss Oak Beige	184 x 1219	212 x 1239	S011	S011	Natural	3010-Y30R	40.1
0795	Swiss Oak Cashmere	184 x 1219	-	S012	S001	Natural	4010-Y30R	33.3
0796	Swiss Oak Golden	184 x 1219	212 x 1239	S015	S015	Natural	4030-Y20R	25.8
0846	Swiss Oak Pearl	184 x 1219	212 x 1239	S014	S014	Natural	3502-Y	36.1
0504	Twist	184 x 1219	212 x 1239	S039	S039	Natural	3010-Y30R	38.9
1285	Urban Street Beige	610 x 610	-	S178	S001	Hammered	4005-Y50R	31.2
1283	Urban Street Light	610 x 610	-	S094	S001	Hammered	3502-R	42.3
1284	Urban Street Medium	610 x 610	-	S180	S001	Hammered	4502-R	26.5
1288	White Lead Oak Blond	184 x 1219	-	S181	S001	Brushed	3010-Y40R	29.6
1289	White Lead Oak Dark Beige	184 x 1219	-	S182	S001	Brushed	5010-Y10R	25.3
1290	White Lead Oak Shadow Grey	184 x 1219	-	S190	S001	Brushed	3502-Y	34.6
0584	White Lime	184 x 1219	212 x 1239	S074	S074	Saw Effect	4005-Y20R	36.0

S001 : White / Blanc S001 : Aluminium

Creation 30

Creation 30		Creation 30 Solid Clic	
Design			
DESCRIPTION / BESCHREIBUNG / BESCHRIJVING / DESCRIPCIÓN / DESCRIÇÃO / DESCRIZIONE			
Total Thickness / Épaisseur totale / Gesamtdicke / Totale dikte / Espesor total / Espessura total / Spessore totale	EN ISO 24346	mm	2.00
	ASTM F386-02	inch	0.08
Thickness of the wearlayer / Épaisseur couche d'usure / Dicke der Nutzschrift / Dikte van de slijtlaag / Espesor capa de uso / Espessura camada de desgaste / Spessore strato di usura	EN ISO 24340	mm	0.30
	ASTM F410-02	inch	0.012
Weight / Poids / Flächengewicht / Gewicht / Peso / Peso / Peso	EN ISO 23997	g/m ²	3 460
Size / Format / Afmetingen / Dimensiones / Dimensões / Dimensione	ISO 24342	mm	457 x 914 610 x 610 184 x 1219 230 x 1500 Chevron 184 x 1219
	ASTM F 536	inch	18" x 36" 24" x 24" 7.25" x 48" 9" x 59" 7.25" x 48" 8.3" x 48.8" 9.4" x 57.5" 15.3" x 28.7"
Number of planks or tiles per box / Sqm per box - Nombre de lames ou dalles par boîte / m ² par boîte - Planken-/Fliesenanzahl pro Karton / m ² pro Karton - Aantal tegels/planken per verpakking/ aantal m ² per verpakking - Numero doghe/piastre e m ² per scatola - Cantidad de losetas / Caja / Quantidade dosmosaicos / Caixa & m ²	-	-	9 / 3.76 m ² 9 / 3.35 m ² 15 / 3.36 m ² 11 / 3.80 m ² Chevron 14 / 3.14 m ² 8 / 2.10m ² 7 / 2.45m ² 7 / 1.98m ²
CLASSIFICATION / CLASSIFICATION / KLASSIFIKATION / CLASSIFICATIE / CLASIFICACIONES / CLASSIFICAÇÕES / CLASSIFICAZIONI			
Norm/Product Specification / Produktnorm / Norme / Spécification produit / Technische eigenschappen / Normas / Normas / Norma prodotto	-	-	EN ISO 10582
	ASTM F 1700-04	-	Class III Type B
European Classification / Classement européen / Europäische Klassifizierung / Europepe classificatie / Clasificación europea / Classificação Europeia / Europea	EN ISO 10874	class	23 - 31
Fire Rating / Classement Feu / Brandverhalten / Brand classificatie / Fuego / Fogo / Reazione al fuoco	EN 13 501-1	class	Bfl-s1
Static Electrical Propensity / Potentiel de charge / Begehaufladung / Elektrische eigenschappen / Compartamiento electrostático / Compartamento electrostático / Resistenza elettrica	EN 1815	kV	< 2
Slip Resistance Wet / Glissance humide / Rutschhemmung / Anti-slip / Deslizamiento húmedo / Escorregamento húmido / Scivolosità umida ⁽¹⁾	DIN 51130 / BGR 181	class	R10
PERFORMANCES / TECHNISCHE EIGENSCHAFTEN / TESTRESULTAAT / PERFORMANCE / CUALIDADES TÉCNICAS / CARATTERISTICHE TECNICHE			
Wear Resistance / Résistance à l'usure / Verschleißverhalten / Slijtvastheid / Abrasion / Abrasão / Resistenza all'abrasione	EN 660.2	mm ³	< 2.0
Wear Group / Groupe d'abrasion / Verschleißgruppe / Groep slijtvastheid / Grupo de abrasión / Grupo de abrasão / Gruppo di abrasione	QB 30	group	T
Type Binder content / Teneur en agent liant / Bindemittelgehalt / Contenido en ligante / Conteúdo em ligante en agent	ISO 10582	group	I
Dimensional stability (norm) / Stabilité dimensionnelle (norme) / Maßstabilität (norm) / Maatvastheid (norm) / Estabilidad Dimensional (Exigencial) / Estabilidade dimensional (normalização) / Stabilità dimensionale (requisito normativo)	EN ISO 23999	%	< 0.25
Dimensional stability (average measured value) / Stabilité dimensionnelle (valeur moyenne mesurée) / Maßstabilität (Durchschnittswert) / Maatvastheid (gemeten gemiddelde waarde) / Estabilidad Dimensional (Valor medido) / Estabilidade Dimensional (Valor medio) / Stabilità dimensionale (rilevata)	-	%	< 0.10
Residual Indentation / Poinçonnement statique rémanent / Resteindruck / Indrukbelasting / Punzonamiento / Punçamento / Impronta	EN ISO 24343-1	mm	< 0.10
Impact sound insulation / Isolation acoustique bruits de chocs / Trittschallverbesserungsmaß / Geluidsisolatie / Acústica / Isolamento acústico	EN ISO 717-2	dB	4
Room Impact / Sonorité à la marche / Raumschall / Loopgeluid / Rumore al calpestio / Sonoridad en la pisada / Sonoridade ao andar	NF S 31074	dB	77
Castor chair test / Essai de la chaise à roulettes / Stuhlrollenbeanspruchung / Rolweerstand bureaustoelen / Determinación del efecto de una silla con ruedas / Resistência a cadeiras de rodas / Resistenza al passaggio di sed	ISO 4918	-	OK
Thermal Conductivity / Conductivité thermique / Wärmeleitfähigkeit / Thermische weerstand / Conductividad térmica / Conutividade térmica / Resistencia térmica / Varmeledningsmotstånd / Varmemestånd	EN ISO 10456	W/(m.K)	0.25
Colour Fastness / Solidité lumière / Lichtehtheid / Resistencia a la luz / Estabilidade das cores / Solidità alla luce	EN ISO 105 - B02	Degree	≥ 6
Surface Treatment / Traitement de surface / Oberflächenvergütung / Oppervlaktebehandling / Tratamiento de superficie / Tratamento de superficie	-	-	ProtecShield™
Chemical Products Resistance / Résistance aux produits chimiques / Verhalten gegenüber Chemikalien ⁽²⁾ / Chemische bestendigheit / Resistencia a los productos químicos / Resistência aos produtos químicos / Resistenza ai prodotti chimici	EN ISO 26987	-	OK
ENVIRONMENT/INDOOR AIR QUALITY / QUALITE DE L'AIR INTERIEUR / UMWELT/RAUMLUFTQUALITÄT / AMBIENTE/QUALIDADE DO AR INTERIORENVIRONNEMENT/ MEDIO AMBIENTE/ CALIDAD INTERIOR DEL AIRE INTERIOR / MEIOAMBIENTE/QUALIDADE DO AR INTERIOR			
TVOC after 28 days / TVOC après 28 jours / TVOC (28 Tage) / TVOC (28 dagen) / TVOC (28 dias) / TVOC (28 días) / TVOC (28 giorni) / TVOC (28 dagar) / TVOC (28 dager)	ISO 16000-6	micrograms / m ³	< 10
Certification / Zeugnis / Certificado / Certificação	-	-	Floorscore®
CE MARKING / MARQUAGE CE / CE KENNZEICHNUNG / EG_CONFORMITEITSMERK / MARCA DE CONFORMIDAD CE / MARCA DE CONFORMIDADE CE / MARCATURA CE DI CONFORMITA			
CE	EN 14041	-	

(1) Ramp test with oil / Plan incliné avec huile / Schiefe Ebene
 (2) Beständig gegenüber nicht färbenden alkoholhaltigen Handdesinfektionsmitteln, Haushaltschemikalien und verdünnten Säuren und Laugen bei kurzzeitiger Einwirkung.

IMPORTANT: The information contained in this document is valid from 01/10/2022 and is subject to change at any time without notice. In the context of constantly changing technology, our customers are responsible, prior to any use, for checking with us that this document is the version in force.

France: Gerflor - Service Express:

N°Azur 0 810 569 569
PRIX APPEL LOCAL

N°Azur FAX 0 810 569 570
PRIX APPEL LOCAL

e-mail: contactfrance@gerflor.com

Other countries: Gerflor International

Tel: +33 (0)4 74 05 40 00

Fax: +33 (0)4 74 05 03 13

e-mail: gerflorcontract@gerflor.com

gerflor.com / follow us



Z0045759

RC Lyon B 726 580 152 - JPE - 10/2022 - Z0045759 - Prix indicatif documentation : 1.50€

We care / We act Our commitments for a sustainable future



CARBON FOOTPRINT*
-20 % kg CO₂ equivalent/m² between 2020 and 2025



BIOSOURCED CONTENT**
10 % by 2025



RECYCLED CONTENT
30 % by 2025



ADHESIVE FREE***
35 % by 2025



ANNUAL VOLUME RECYCLED
60 000 t by 2025

Gerflor®

* Scopes 1 and 2 defined in the GHG protocol ** % of activity with biosourced materials *** % of activity - adhesive free solution